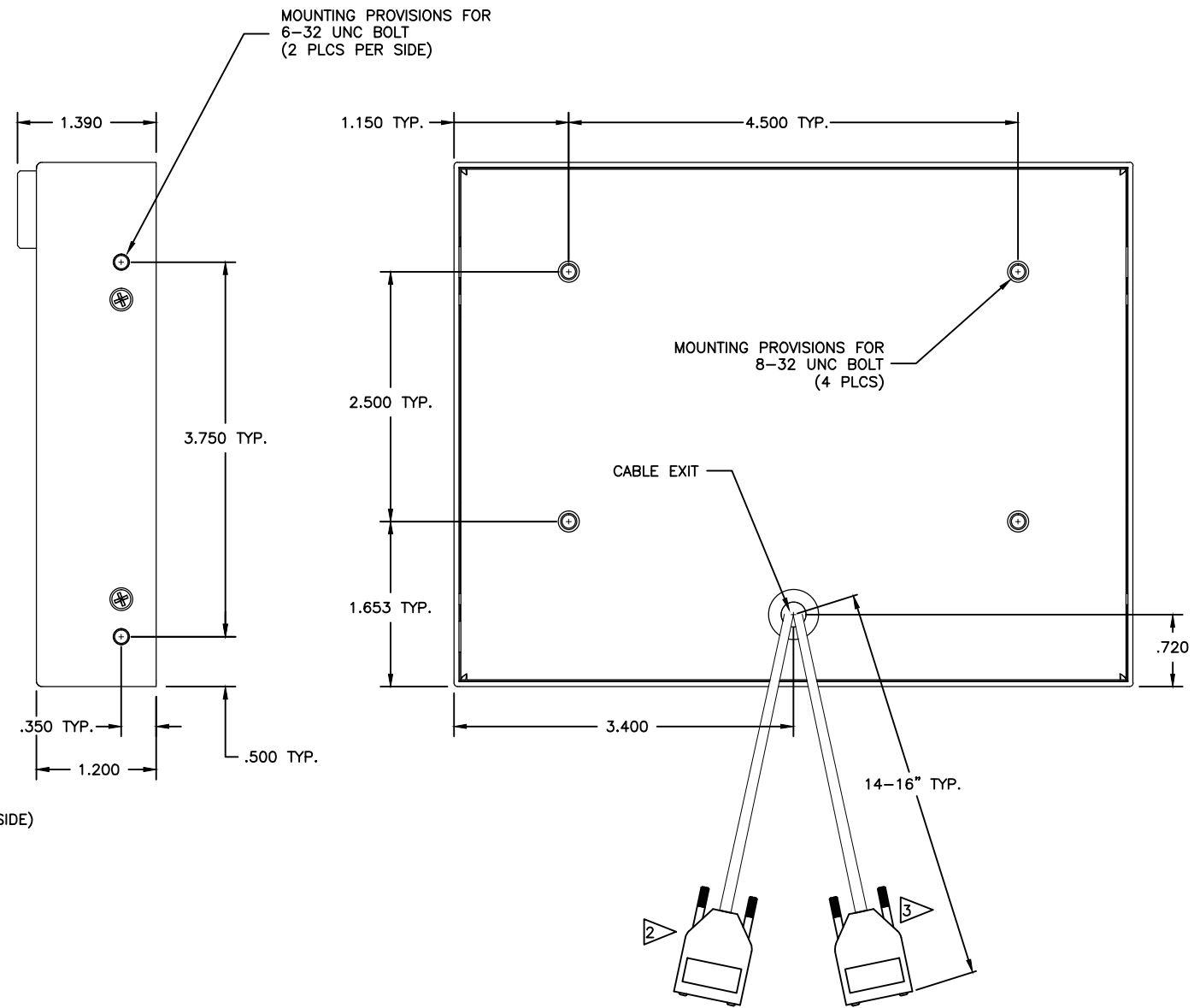
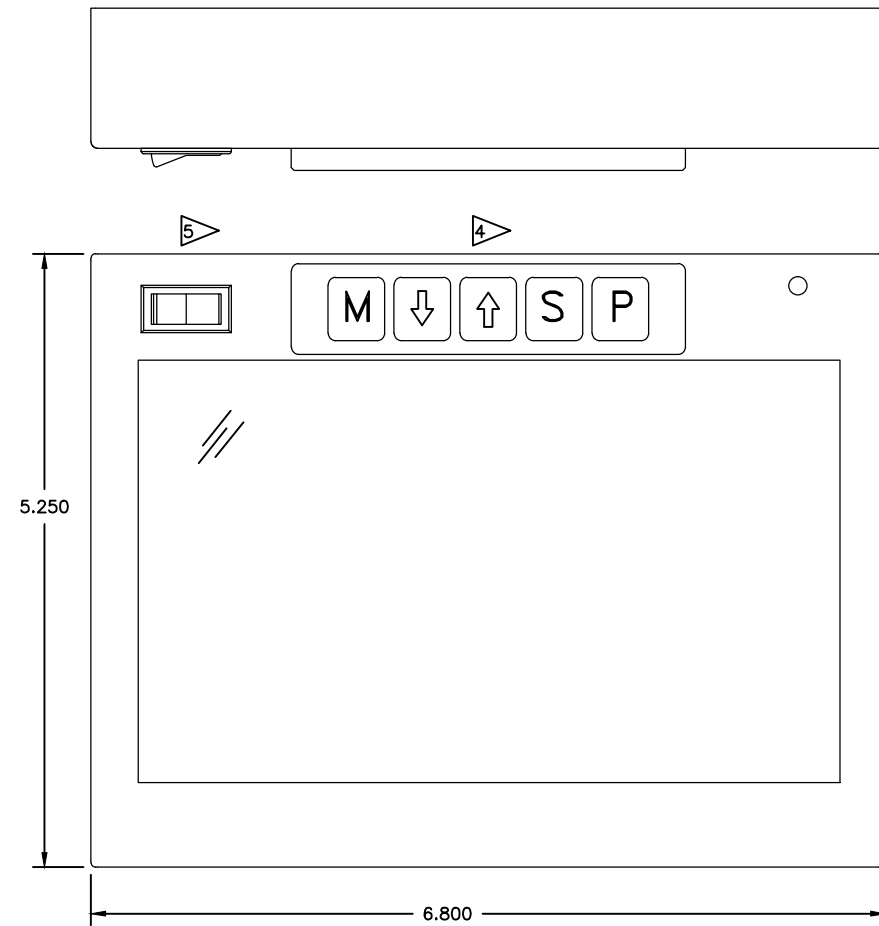


REV	DESCRIPTION	DATE	BY	APPD
O.I.	ORIGINAL ISSUE	01-31-12	DMC	ELH

NOTES:

- FEATURES: PANEL MOUNT, COMPOSITE x 2, VGA, DVI-D, NVG, SUNLIGHT READABLE, 5 BUTTON MEMBRANE SWITCH
- DVI-D MALE CONNECTOR WITH THUMB SCREWS
- DB15 MALE CONNECTOR (PWR/COMPOSITE/VGA) WITH THUMB SCREWS

- 5 BUTTON MEMBRANE SWITCH CONTROLS  
M MENU: ACTIVATES THE OSD MENU OR GOES TO PREVIOUS MENU  
↓ DOWN: MOVES THE HIGHLIGHT ICON DOWN TO THE DESIRED FUNCTION  
↑ UP: MOVES THE HIGHLIGHT ICON UP TO THE DESIRED FUNCTION  
S SELECT: CYCLES THROUGH SOURCE INPUTS  
P POWER: POWERS MONITOR ON AND OFF
- NVG ON/OFF SWITCH TOGGLES B/W NVG & DAY MODE



6. DB15 MALE CONNECTOR PINOUT (MONITOR SIDE)

- PIN 1 28VDC POWER
- PIN 2 28VDC GROUND
- PIN 3 N/C
- PIN 4 COMPOSITE VIDEO 1 - SIGNAL
- PIN 5 COMPOSITE VIDEO 1 - SHIELD
- PIN 6 N/C
- PIN 7 COMPOSITE VIDEO 2 - SIGNAL
- PIN 8 COMPOSITE VIDEO 2 - SHIELD
- PIN 9 RED VIDEO
- PIN 10 GREEN VIDEO
- PIN 11 BLUE VIDEO
- PIN 12 RED GROUND
- PIN 13 GREEN GROUND
- PIN 14 HORIZONTAL SYNC
- PIN 15 VERTICAL SYNC

7. DVI-D MALE CONNECTOR PINOUT (MONITOR SIDE)

- PIN 1 TMDS DATA 2-
- PIN 2 TMDS DATA 2+
- PIN 3 TMDS DATA 2 SHIELD
- PIN 4 N/C
- PIN 5 N/C
- PIN 6 DDC CLOCK
- PIN 7 DDC DATA
- PIN 8 N/C
- PIN 9 TMDS DATA 1-
- PIN 10 TMDS DATA 1+
- PIN 11 TMDS DATA 1 SHIELD
- PIN 12 N/C
- PIN 13 N/C
- PIN 14 +5V
- PIN 15 GROUND
- PIN 16 HOT PLUG DETECT
- PIN 17 TMDS DATA 0-
- PIN 18 TMDS DATA 0+
- PIN 19 TMDS DATA 0 SHIELD
- PIN 20 N/C
- PIN 21 N/C
- PIN 22 TMDS CLOCK SHIELD
- PIN 23 TMDS CLOCK+
- PIN 24 TMDS CLOCK-
- C1 N/C
- C2 N/C
- C3 N/C
- C4 N/C

DWN	D.M.C.	01-31-12	<b>FLIGHT DISPLAY SYSTEMS</b>	
APV	E.L.H.	01-31-12		
TOLERANCES			FD70CV-M-C-1 SPECIFICATION DRAWING	
3 PLACE DECIMALS +/- .010				
2 PLACE DECIMALS +/- .020			MATERIAL	
1 PLACE DECIMALS +/- .030				
FRACTIONS +/- ANGLES +/- 30'			DRAWING NO. MSD-197	
FINISH				
SCALE		1/1	SHEET 1 OF 1	
			REVISION O.I.	