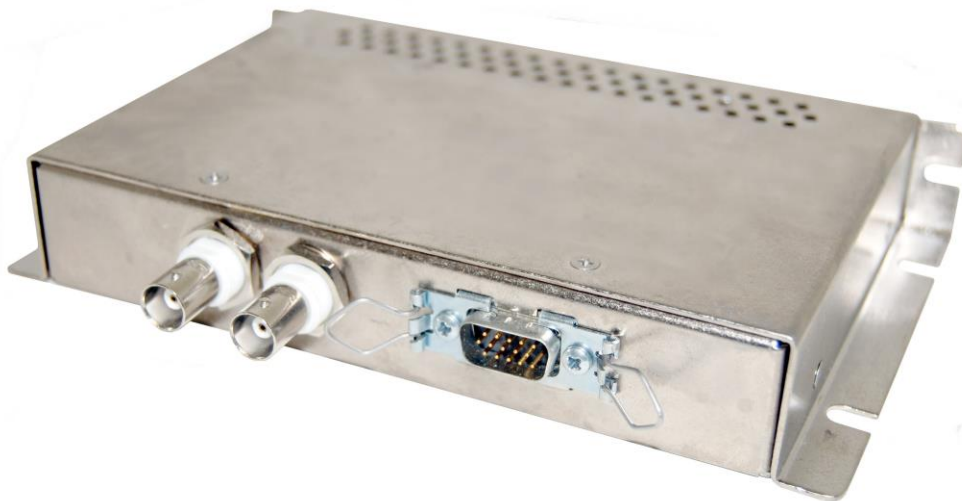


Installation and Operation Manual

FDCOMP-SDI

Composite to HDSDI Converter





FDCOMP-SDI

Composite to HDSDI Converter

© 2014 Flight Display Systems. All Rights Reserved.

Flight Display Systems

6435 Shiloh Road

Alpharetta, GA 30005

470-239-7400 Phone

678-867-6742 Fax

sales@FlightDisplay.com

www.FlightDisplay.com

For the most current copy of all product manuals, please visit our website at www.FlightDisplay.com

For additional support, please visit our Frequently Asked Questions section located on our web site Support Center at <http://support.FlightDisplay.com>.

Table of Contents





General Information	4
Functionality	4
Back View and Specifications	4
Wiring Suggestions	5
Video Wiring	5
S-Video/Composite	5
Power	6
Technical Drawing	6
Pinout	7
Technical Support	8
Instructions for Continued Airworthiness	8
Warranty	9
Log of Revisions	10

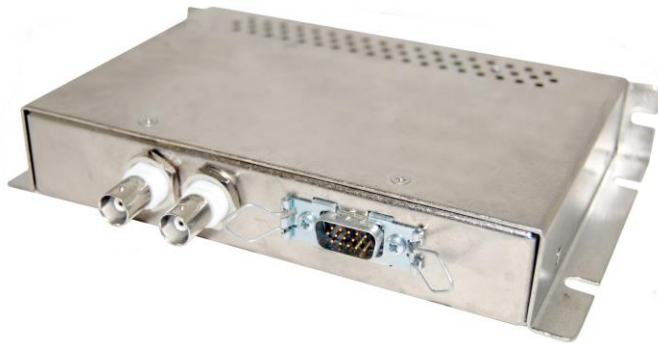


General Information

Functionality

The Composite to HDSDI Converter receives a single composite input and converts it to a HD-SDI output. The converter provides the ability to interface video from DVD players, TV receivers, or iPad/iPods to HD-SDI switches or displays.

Back View



Specifications

Dimensions	7.00" (L)x1.25" (H)x4.25" (W)
Weight	1Lb.
Power	28VDC @ 1AMP
Operating Temperature	-20 C to 60 C
Video Input	Composite Video (NTSC)
Video Output	HD-SDI

Wiring Suggestions

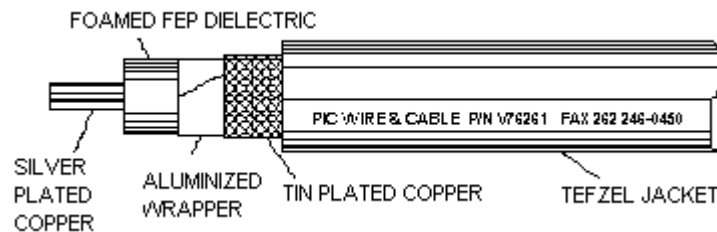
Video Wiring

Avoid routing video wiring parallel to:

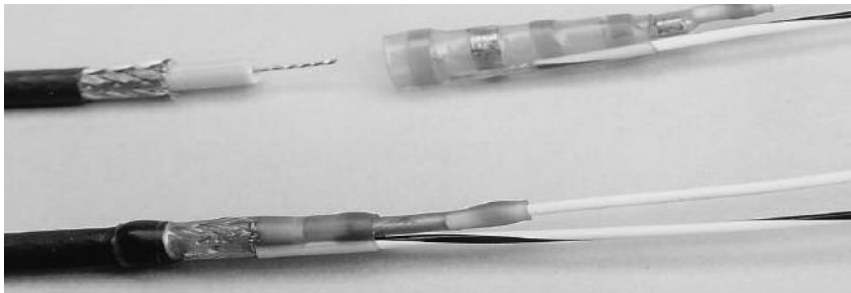
- AC wiring
- Strobe wiring
- DC motor supply cables
- Inverter cabling
- Or any other potential noise source.

S-Video/Composite

Recommended cable for s-video/composite and audio purposes is PIC 75 Ohm Coax, P/N V76261. This is a lightweight, flexible, and low signal loss cable which meets FAA flammability requirements of FAR 23.1359(d), FAR 25.853(a) and FAR 25.869(a)(4).



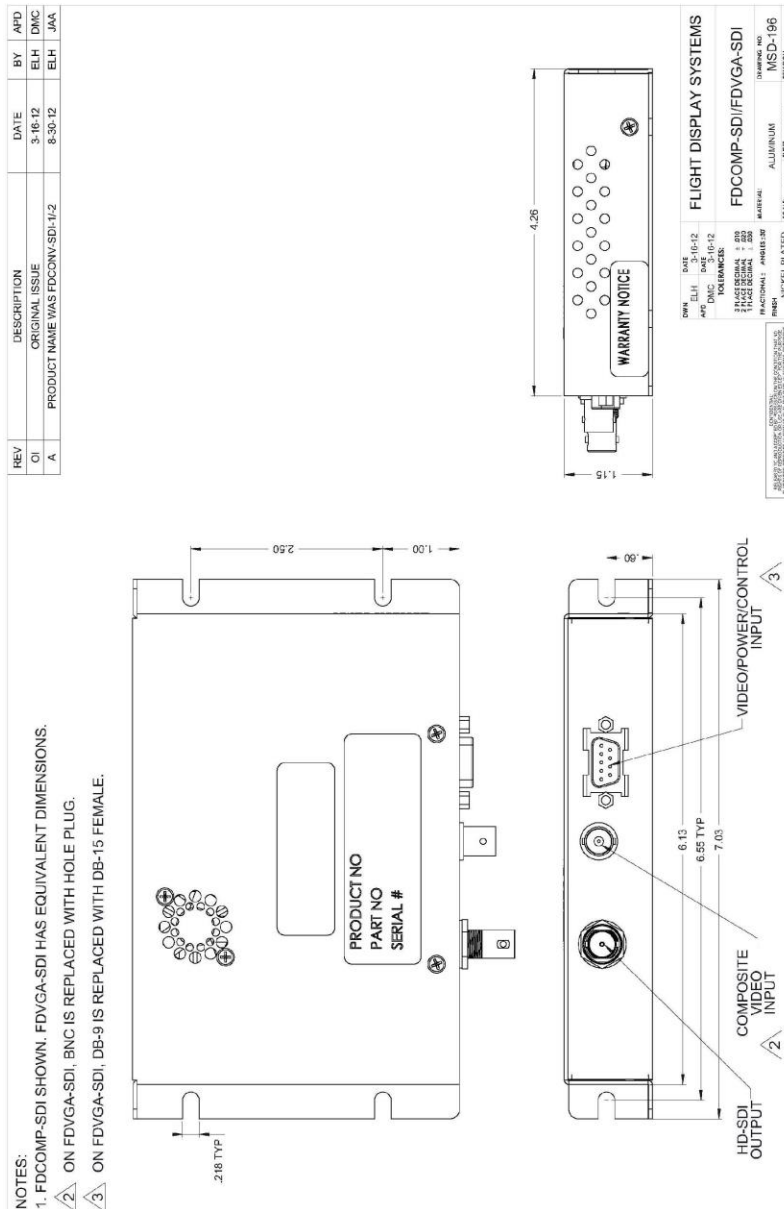
Similar aviation coaxial cable can be used from other vendors, as well. Some aircraft are prone to AC noise. If noise is observed on Composite Video signals that use standard Coax Cabling, then we recommend adding to the composite source a 75 Ohm video isolation transformer such as Deerfield Laboratory, Inc. Part No. 162-1 (www.deerfieldlab.com, (650) 632-4090). In most cases this should be added to the video output of the source. Coax cables should be terminated using solder sleeve coaxial cable terminators, Raychem P/N: CWT-4174-W122-5/9



Power

This is a **28VDC** device that requires 1.0 Amps of power to operate, a minimum of 22 AWG wire is recommended for Power and Ground applications.

Technical Drawing

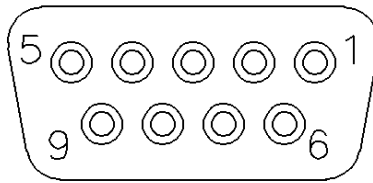


Pinout

Pin out Standard Density DB-9 Receptacle (Supplied)

Connector
 Crimp Contacts

P/N: M24308/2-281 or Equivalent
 P/N: M39029/63-368 or Equivalent



MATING FACE

Pin Number	Description
1	COMPOSITE SIGNAL
2	N/C
3	N/C
4	28VDC GROUND
5	28VDC POWER
6	COMPOSITE RETURN
7	N/C
8	N/C
9	N/C



Technical Support

Should you have any questions concerning this product or other Flight Display Systems products, please contact our Product Support representatives at (470) 239-7421.

Flight Display Systems

6435 Shiloh Road

Alpharetta, GA 30005

Phone: 470-239-7400

Fax: 678-867-6742

Email: sales@FlightDisplay.com

For further product information, technical data and sample wiring diagrams, please click on the **Dealers** section of our web site at www.FlightDisplay.com

Instructions for Continued Airworthiness

The FDCOMP-SDI converter is designed not to require regular general maintenance.



Limited Warranty

All Flight Display Systems (FDS) products are warranted to be free from material or manufacturing defects for a period of 24 months from the date of shipment for General Aviation customers or 12 months from the date of shipment for Government/Special Mission customers. Any material or repair workmanship for in warranty repair service will be specifically warranted for 90 days or the remainder of the original warranty period, whichever is longer. If the original warranty period has expired, the 90 day repair warranty is limited to the material and workmanship specific to the repair activity completed.

The following conditions are exclusions to warranty coverage:

1. Labor costs associated with installation, removal or reinstallation of any product.
2. Damage to or malfunction caused by any unauthorized alteration made to the product.
3. Resolving signal quality issues caused by externally generated noise introduced by aircraft electrical systems or other components connected to any FDS product.
4. Any malfunction caused by improper installation or connection to aircraft wiring, industry standard cabin management/ inflight entertainment systems, or third party commercial equipment not specifically identified as compatible with FDS products.
5. Any malfunction caused by installation that does not conform to precautions associated with operating environments listed in the operating manual or consistent with industry best practices such as; high temperature, adequate ventilation, high humidity, high dust, or power surges.
6. Cosmetic damage or damage to internal components caused by installation or removal, failure to follow installation or operating instructions, or any neglect or misuse of the product.
7. Any product that is returned for service with a broken tamper evident seal, indicating tampering or improper handling of the product by an unauthorized person. Violation of product tamper evident seals or modification of factory installed serial and PMA labels voids any warranty, either expressed or implied.

The FDS technical support team is available to provide distance troubleshooting support during business hours (8:00am to 5:00pm EST) Monday through Friday at (470) 239-7421.

Many repair requests can be resolved through distance support and may not require return of merchandise to the factory. If a product must be returned to the factory for repair, an RMA number will be issued as directed by the technical support team and communicated by the repair coordinator.

Upon request by the customer, FDS may send a service technician onsite to repair any non-PMA products. The travel expenses incurred to include transportation, lodging and meals along with the technician's hourly rate shall be payable by the customer in accordance with FDS' applicable rates and procedures.

Flight Display Systems will, upon receipt of returned merchandise, remanufacture or replace the unit at our discretion and return the product by Ground Return Shipping. Express return shipment will be the responsibility of the sender.

This warranty is not transferable.

Any implied warranties expire at the express limited warranty expiration date. FDS shall not be held liable for any indirect, special, punitive, incidental or consequential damages.

Some states do not allow limitation on the length of an implied warranty. In such states, the exclusions or limitations of this limited warranty may not apply.



Log of Revisions

Rev	Date	Page	Description
A	07/06/2012		Initial Release
B	08/31/2012		Updated photo, MSD drawing
C	10-17-2014	2,4,8,9	Updated address and warranty info. Also updated Specifications video input.

