

Installation and Operation Manual

FDCTRL-1

Controller Unit





Table of Contents

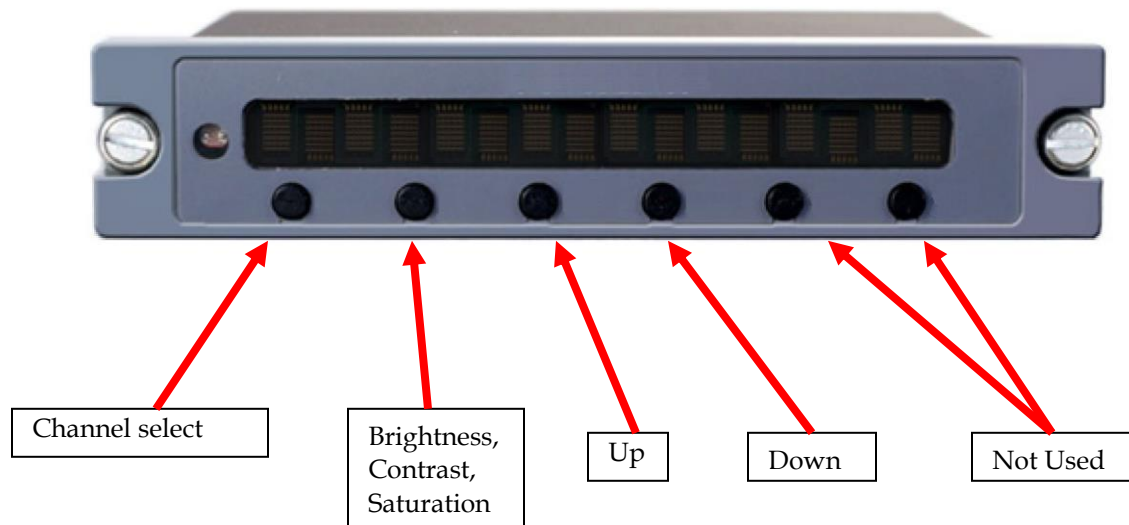
General Information.....	3
Front View	3
Specifications.....	4
Power	4
Power and Ground Wiring.....	4
Power/Video.....	5
Operation Instructions	6
Technical Support.....	6
Instructions for Continued Airworthiness	6
Technical Drawing.....	7
Warranty	8
Log of Revisions.....	9



General Information

The FDCTRL-1 is a Controller designed to allow a pilot to enter various information manually into an FD200CPU series Moving Map when the FMS/GPS is unable to output this data.

Front View



Specifications

Display Type	16 Character LED Display
Display Color	Green
Brightness	Variable
Controller Dimensions	3.61" (W)x1.11" (H)x5.75" (D)
Controller Weight	9 oz.
Power	28VDC @250mA
Function Controls	Six Control Buttons
Operating Temperature	0-50° C (32-122° F)

Power

This is a **28V DC** monitor that requires 250 milliamps to operate.

Power and Ground Wiring

22 AWG wire is recommended for Power and Ground applications.

Power/Video

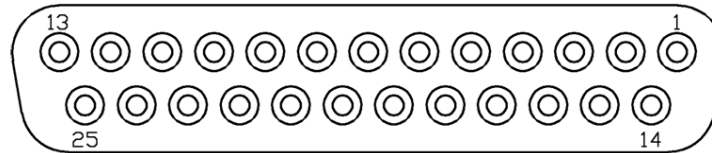
Pin out for DB-25 Receptacle

Connector

P/N: DB-F25CH

Crimp Contacts

P/N: M39029/63-368 or Equivalent



MATING FACE

Pin Number	Description
1	28VDC Power
2	28VDC Ground
3	N/C
4	Channel 2 TX
5	Channel 1 TX
6	N/C
7	N/C
8	N/C
9	N/C
10	N/C
11	N/C
12	N/C
13	N/C
14	28DC Power
15	Ground
16	N/C
17	Channel 2 RX
18	Channel 1 RX
19	N/C
20	Channel Select (+28V = CH 2 SEL; N/C = CH 1 SEL)
21	Brightness Select (+28V = Brightness; N/C = Contrast)
22	Increment Selection (+28V = Active; N/C = Inactive)
23	Decrement Selection (+28V = Active; N/C = Inactive)
24	Ground
25	Ground

*Saturation can be adjusted from front control panel of FDCTRL-1 only



Operation Instructions

After powering up, the unit will display “FDS Avionics Corp.”, followed by firmware version and a brief loading delay. It will then be ready for use.

Technical Support

Should you have any questions concerning this product or other FDS Avionics Corp. products, please contact our Product Support representatives at 470-239-7421.

FDS Avionics Corp.
6435 Shiloh Road
Alpharetta, GA 30005
Phone: 470-239-7400
Fax: 470-239-7439
Email: sales@FDSAvionics.com

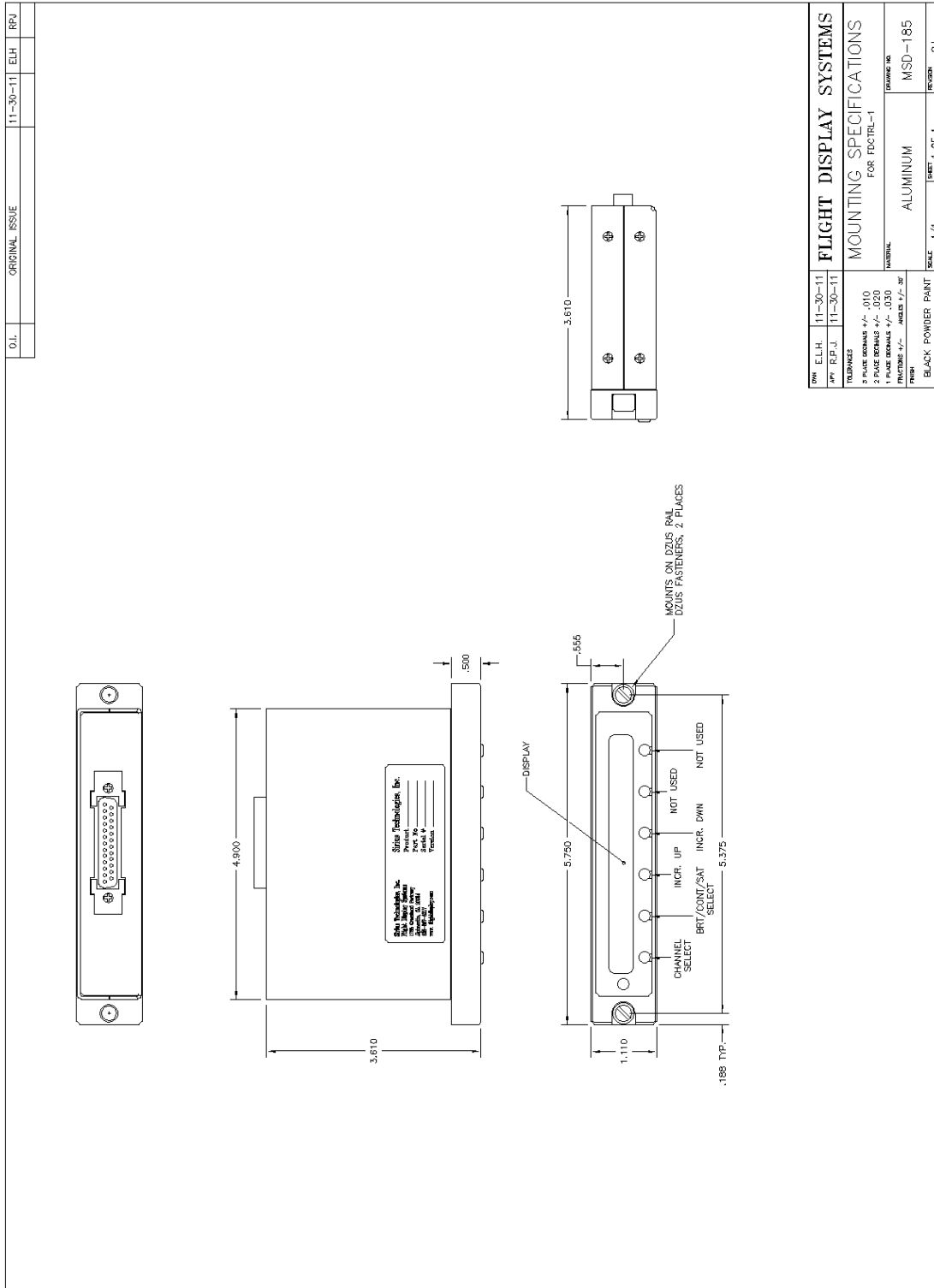
For further product information, technical data and sample wiring diagrams, please click on the **Dealers** section of our web site at www.FDSAvionics.com

Instructions for Continued Airworthiness

The FDCTRL-1 is designed not to require regular general maintenance.



Technical Drawing



D.L.	ORIGINAL ISSUE	11-30-11	ELH	RFU
------	----------------	----------	-----	-----

REV	ELH	11-30-11	FLIGHT DISPLAY SYSTEMS
APP	R.P.J.	11-30-11	MOUNTING SPECIFICATIONS
FOR FDCTRL-1			
TOLERANCES			
3	PLATE DIMENALS	+/- .010	DRAWING NO.
2	PLATE DIMENALS	+/- .020	MSD-185
1	PLATE DIMENALS	+/- .030	MATERIAL
FINISH	BLACK POWDER PAINT	SCALE	1/1
		SHEET	1 OF 1
		REVISION	0.1



Warranty Information

All FDS Avionics Corp. (FDS) products are warranted to be free from material or manufacturing defects for a period of 24 months from the date of shipment for General Aviation customers or 12 months from the date of shipment for Government/Special Mission customers. Any material or repair workmanship for in warranty repair service will be specifically warranted for 90 days or the remainder of the original warranty period, whichever is longer. If the original warranty period has expired, the 90 day repair warranty is limited to the material and workmanship specific to the repair activity completed.

The following conditions are exclusions to warranty coverage:

1. Labor costs associated with installation, removal or reinstallation of any product.
2. Damage to or malfunction caused by any unauthorized alteration made to the product.
3. Resolving signal quality issues caused by externally generated noise introduced by aircraft electrical systems or other components connected to any FDS product.
4. Any malfunction caused by improper installation or connection to aircraft wiring, industry standard cabin management/ inflight entertainment systems, or third party commercial equipment not specifically identified as compatible with FDS products.
5. Any malfunction caused by installation that does not conform to precautions associated with operating environments listed in the operating manual or consistent with industry best practices such as; high temperature, adequate ventilation, high humidity, high dust, or power surges.
6. Cosmetic damage or damage to internal components caused by installation or removal, failure to follow installation or operating instructions, or any neglect or misuse of the product.
7. Any product that is returned for service with a broken tamper evident seal, indicating tampering or improper handling of the product by an unauthorized person. Violation of product tamper evident seals or modification of factory installed serial and PMA labels voids any warranty, either expressed or implied.

The FDS technical support team is available to provide distance troubleshooting support during business hours (8:00am to 5:00pm EST) Monday through Friday at (470) 239-7421.

Many repair requests can be resolved through distance support and may not require return of merchandise to the factory. If a product must be returned to the factory for repair, an RMA number will be issued as directed by the technical support team and communicated by the repair coordinator.

Upon request by the customer, FDS may send a service technician onsite to repair any non-PMA products. The travel expenses incurred to include transportation, lodging and meals along with the technician's hourly rate shall be payable by the customer in accordance with FDS' applicable rates and procedures.

FDS Avionics Corp. will, upon receipt of returned merchandise, remanufacture or replace the unit at our discretion and return the product by Ground Return Shipping. Express return shipment will be the responsibility of the sender.

This warranty is not transferable.

Any implied warranties expire at the express limited warranty expiration date. FDS shall not be held liable for any indirect, special, punitive, incidental or consequential damages.

Some states do not allow limitation on the length of an implied warranty. In such states, the exclusions or limitations of this limited warranty may not apply.





Log of Revisions

Rev	Date	Page	Description
A	07/29/2010		Initial Release
B	11/23/2011		New Format, added operating temperature, added technical drawing, updated pinout – added Ground to Pin 15, updated DO-160 testing
C	5/05/2017	All	Company name, warranty, and format change.

