

Installation and Operation Manual

FD102SMT

10.2” Widescreen LCD and Slide Mount





Table of Contents

General Information	3
Front View	3
Additional Information	3
Specifications	4
Installation Instructions	4
Power	5
Wiring Suggestions.....	5
S-Video/Comp and Audio Wiring	5
VGA Wiring	6
Power and Ground Wiring	6
Power/Video.....	6
Technical Drawing.....	7-8
Operation Instructions.....	9
Button Controls	9
Remote Control	10
Technical Support.....	11
Instructions for Continued Airworthiness	11
Limited Warranty	12
Log of Revisions	13



General Information

This high resolution 10.2” Widescreen LCD is perfect for cabin video and graphical entertainment. Built with retrofit aircraft integration in mind, this display can switch between three video input sources using an infrared remote or the control buttons on the top of the monitor.

Front View



Additional Information

The FD102CV, an integral part of the FD102SMT, can be connected to existing video switchers and can take a composite video input from a selector interface box. Multiple input sources can be selected and displayed on the monitor.

The FD102CV is made of all metal components. DO-160 testing has been completed and is available upon request.

The FD102SMT is visible to passengers both while stored and deployed, and can be pulled out and into the aisle for more accessible viewing. The FD102SMT is offered in a Left or Right configuration. The FD102SMT-**L** is mounted on the **Left** side of the bulkhead, to extend rightwards into the aisle, while the FD102SMT-**R** is installed on the **Right** side of the bulkhead, extending leftwards into the aisle.

Specifications

Display Size	8.7"(W) x 5.1"(H)
Display Type	10.2" Widescreen TFT Color LCD
Display Color	262,144 Colors
Dimensions Deployed	20.00"(W) x 7.44"(H) x 1.81"(D)
Dimensions Stowed	10.09"(W) x 7.44"(H) x 1.81"(D)
Screen Resolution	800x480 / 640x480 ~ 1024x768
Brightness	500 cd/m ²
Weight	4 lbs 11.5 oz
Power	12VDC @ 2 AMPS 28VDC @ .5 AMP
PC & Video Input	SVGA (Analog RGB 15 pin D-sub) 2 Composite Video
Video Type Supported	NTSC/PAL
Screen control	On Screen Display Menu
Remote Control	IR, included
Materials	Aluminum
DO-160 testing	Section 21 Category B

Installation Instructions

All cabin entertainment equipment, such as the FD102SMT, should be installed on a non-essential bus and have a dedicated circuit breaker. It is a requirement that a switch be installed in the cockpit so that the pilot can de-energize the entertainment system should it become necessary.

The FD102SMT is integrated with a rugged slide mount bracket. Usually the FD102SMT is mounted against a bulkhead behind a seat, exposed to the interior. The FD102SMT is secured by four #8 machine screws. The monitor locks into place when stowed and deployed.

There is one DB-15 male connector on a 10" cable coming off of the back of the unit. The FD102SMT comes with a female DB-15 connector and crimp pins. The FD102CV has already been connected to the slide mount and tested prior to shipping.

Power

This is a **12VDC** monitor that requires 2 Amps of power to operate. This is also offered as FD102SMT (**28V**) which is a **28VDC** monitor that requires .5 Amp of power. The unit turns on automatically upon power application.

Wiring Suggestions

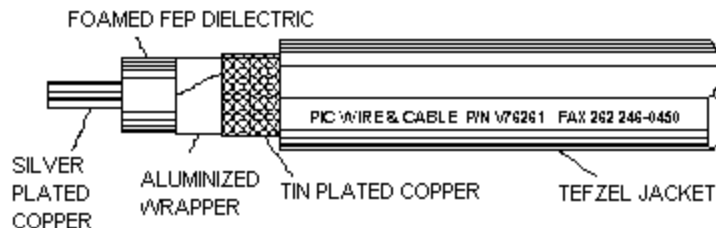
All shields should be grounded to the connector at the source, and floating at the display.

Avoid routing video wiring parallel to:

- AC wiring
- Strobe wiring
- DC motor supply cables
- Inverter cabling
- Or any other potential noise source

S-Video/Composite and Audio Wiring

Recommended cable for s-video/composite and audio purposes is PIC 75 Ohm Coax, P/N V76261. This is a lightweight, flexible, and low signal loss cable which meets FAA flammability requirements of FAR 23.1359(d), FAR 25.853(a) and FAR 25.869(a)(4).

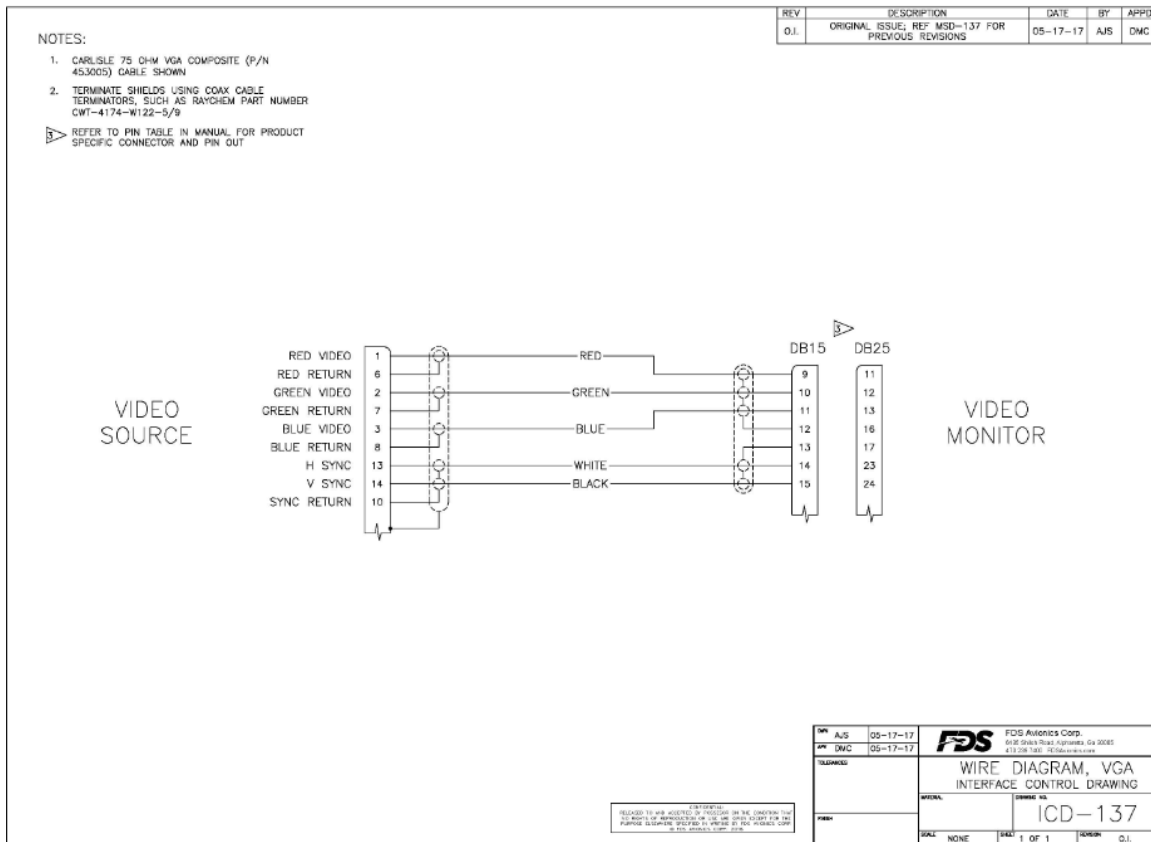


Similar aviation coaxial cable can be used from other vendors, as well.

Some aircraft are prone to AC noise - we recommend adding to the composite source a 75 Ohm video isolation transformer such as Deerfield Laboratory, Inc. Part No. 162-1 (www.deerfieldlab.com, (650) 632-4090). In most cases this should be added to the video output of the source.

VGA Wiring

Recommended cable for VGA purpose is ECS P/N 453005. This is a single shielded cable containing 5 separate coaxial cables, color-coded to match the functions of the wires.

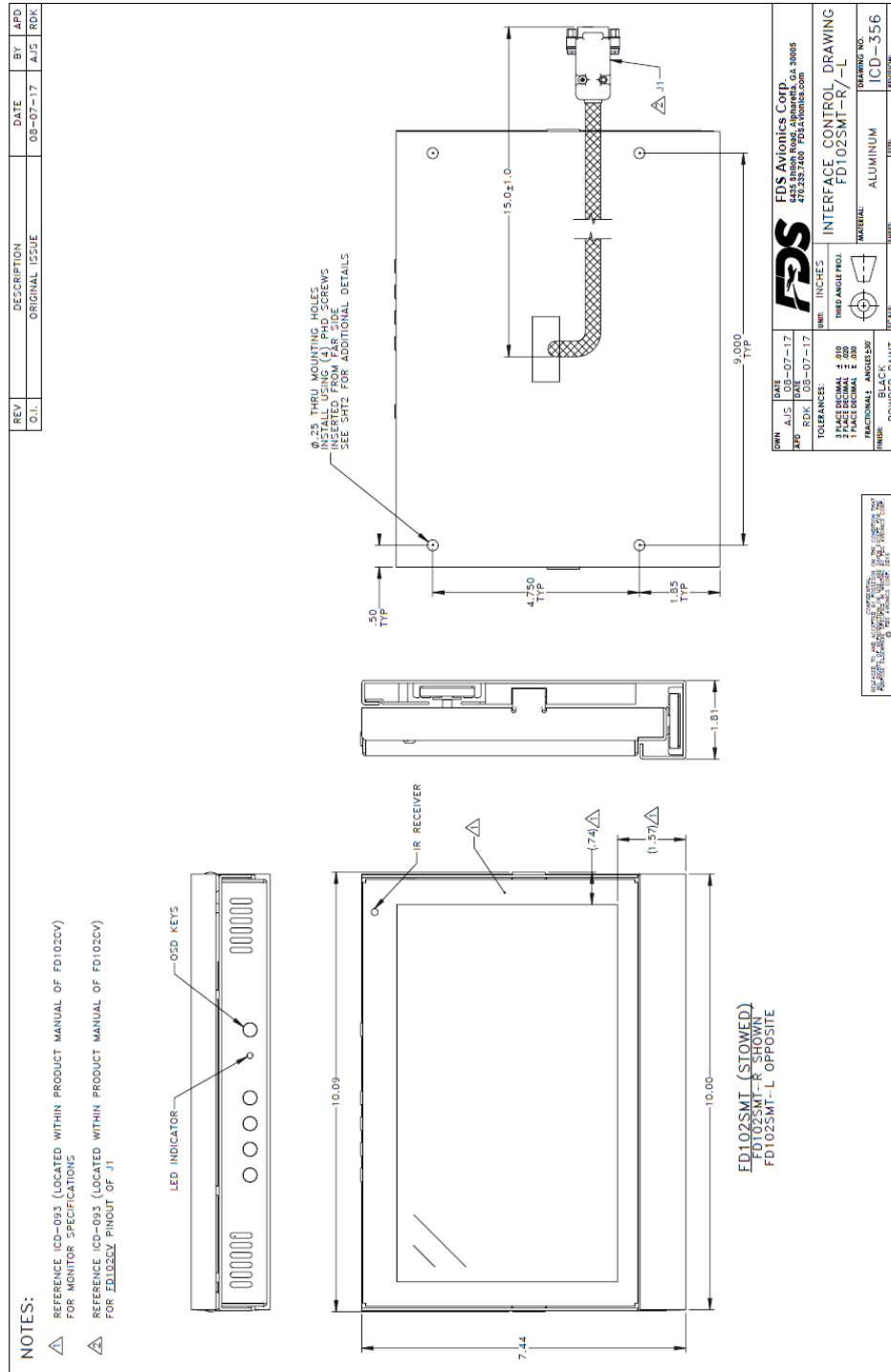


The individual wires should be extended with 6" 22awg wires using an environmental splice for the red & green wires, and Raychem caps for the blue, white, and black wires.

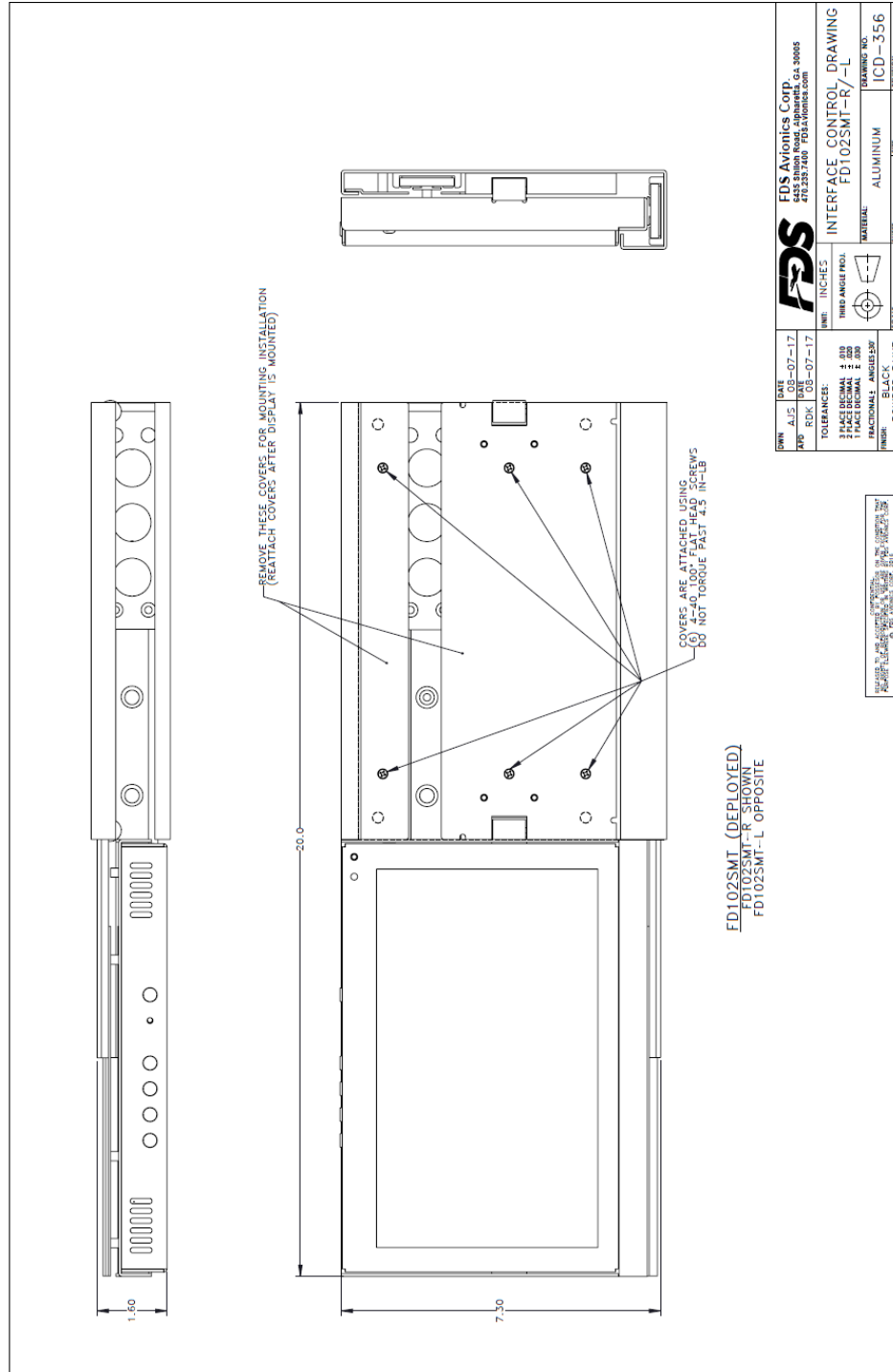
Power and Ground Wiring

22 AWG wire is recommended for Power and Ground applications.

Technical Drawing



Technical Drawing (Cont)

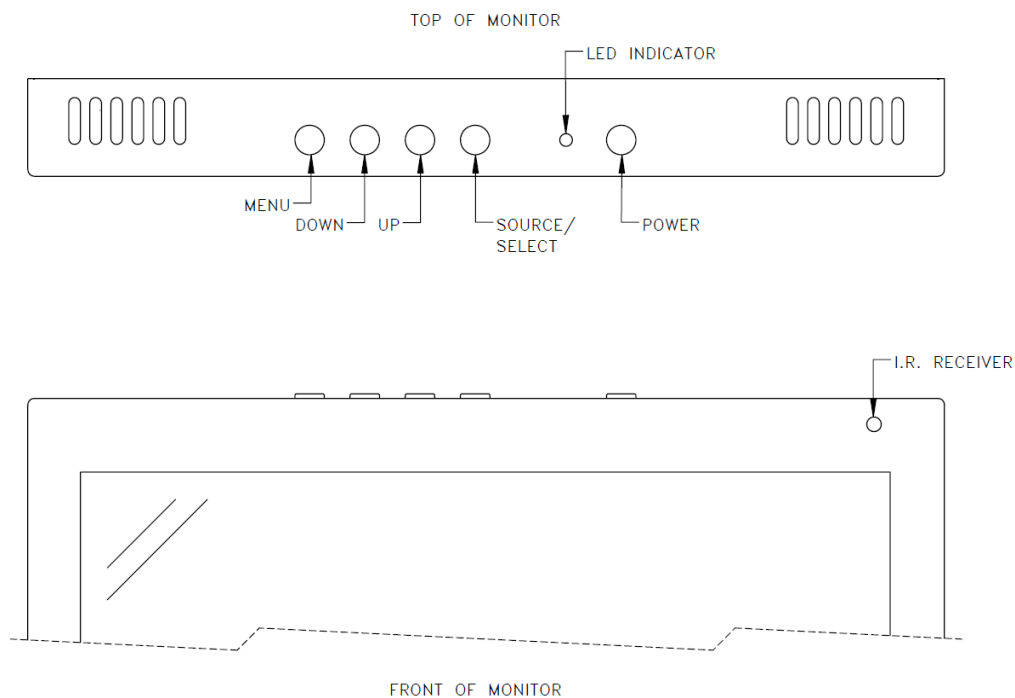


Operation Instructions

The FD102CV is continuously on but can be de-energized by removing power from the entertainment system. No pilot or aircrew action is necessary during flight or ground operation.

Passengers can change the video output from the FD102CV using the video source select switch on the LCD monitor, or remotely throughout the cabin with the included IR remote.

Button Controls



BUTTON	FUNCTION	DESCRIPTION
1	POWER	Press to turn the monitor on if currently off. Hold to turn the monitor off.
2	SOURCE	Press to switch between sources.
3	UP	Press to increase the value of a menu item.
4	DOWN	Press to decrease the value of a menu item.
5	MENU	Press to activate Menu.

Remote Control



The remote control included with the FD102CV contains the same functionality available on the display buttons, to include power, source, menu, and directional arrows.



Technical Support

Should you have any questions concerning this product or other FDS Avionics Corp. products, please contact our Product Support representatives at 470-239-7421.

FDS Avionics Corp.
6435 Shiloh Road
Alpharetta, GA 30005
Phone: +1 (470) 239-7400
Fax: +1 (470) 239-7439
Email: sales@FDSAvionics.com

For further product information, technical data and sample wiring diagrams, please click on the **Dealers** section of our web site at www.FDSAvionics.com

Instructions for Continued Airworthiness

The FD102SMT is designed not to require regular general maintenance.



Limited Warranty

All FDS Avionics Corp (FDS) products are warranted to be free from material or manufacturing defects for a period of 24 months from the date of shipment for General Aviation customers or 12 months from the date of shipment for Government/Special Mission customers. Any material or repair workmanship for in warranty repair service will be specifically warranted for 90 days or the remainder of the original warranty period, whichever is longer. If the original warranty period has expired, the 90 day repair warranty is limited to the material and workmanship specific to the repair activity completed.

The following conditions are exclusions to warranty coverage:

1. Labor costs associated with installation, removal or reinstallation of any product.
2. Damage to or malfunction caused by any unauthorized alteration made to the product.
3. Resolving signal quality issues caused by externally generated noise introduced by aircraft electrical systems or other components connected to any FDS product.
4. Any malfunction caused by improper installation or connection to aircraft wiring, industry standard cabin management/ inflight entertainment systems, or third party commercial equipment not specifically identified as compatible with FDS products.
5. Any malfunction caused by installation that does not conform to precautions associated with operating environments listed in the operating manual or consistent with industry best practices such as; high temperature, adequate ventilation, high humidity, high dust, or power surges.
6. Cosmetic damage or damage to internal components caused by installation or removal, failure to follow installation or operating instructions, or any neglect or misuse of the product.
7. Any product that is returned for service with a broken tamper evident seal, indicating tampering or improper handling of the product by an unauthorized person. Violation of product tamper evident seals or modification of factory installed serial and PMA labels voids any warranty, either expressed or implied.

The FDS technical support team is available to provide distance troubleshooting support during business hours (8:00am to 5:00pm EST) Monday through Friday at (470) 239-7421.

Many repair requests can be resolved through distance support and may not require return of merchandise to the factory. If a product must be returned to the factory for repair, an RMA number will be issued as directed by the technical support team and communicated by the repair coordinator.

Upon request by the customer, FDS may send a service technician onsite to repair any non-PMA products. The travel expenses incurred to include transportation, lodging and meals along with the technician's hourly rate shall be payable by the customer in accordance with FDS' applicable rates and procedures.

FDS Avionics Corp will, upon receipt of returned merchandise, remanufacture or replace the unit at our discretion and return the product by Ground Return Shipping. Express return shipment will be the responsibility of the sender.

This warranty is not transferable.

Any implied warranties expire at the express limited warranty expiration date. FDS shall not be held liable for any indirect, special, punitive, incidental or consequential damages.

Some states do not allow limitation on the length of an implied warranty. In such states, the exclusions or limitations of this limited warranty may not apply.



Log of Revisions

Rev	Date	Page	Description
A	01/30/2007	---	---
B	03/27/2007	3,4,5	Added information about FD102SMT (28V)
C	04/11/2007	6	Changed required amperage information.
D	08/09/2007	1	Changed picture to show correct positioning.
E	02/16/2009	2,10	Updated specifications, warranty info
F	12/10/2009	1,6,7	Revised product photo, button controls, remote control
G	08/24/2012		Updated format, warranty and non-PMA info
H	08/14/2017	All	New Company, New Format, New Branding

